

EL-Skypport

Elinchrom Wireless System

 **elinchrom**[®]

EL-Skyport



Elinchrom Wireless System

Two in one. Providing both flash triggering and the wireless remote control of all RX flash unit functions. A new, miniaturized, ultra secure, high speed data transmission system providing hand-held or computer wireless control of all Elinchrom RX power units. There is also a "Universal Set" for flash synchronization with other flash systems. Huge technology advances have allowed the modules to be as small as .04-.1 lbs. each. For multiple flash unit control, there are 8 frequency channels and 4 workgroups.

Transmitter

Transmits only

Transceiver RX

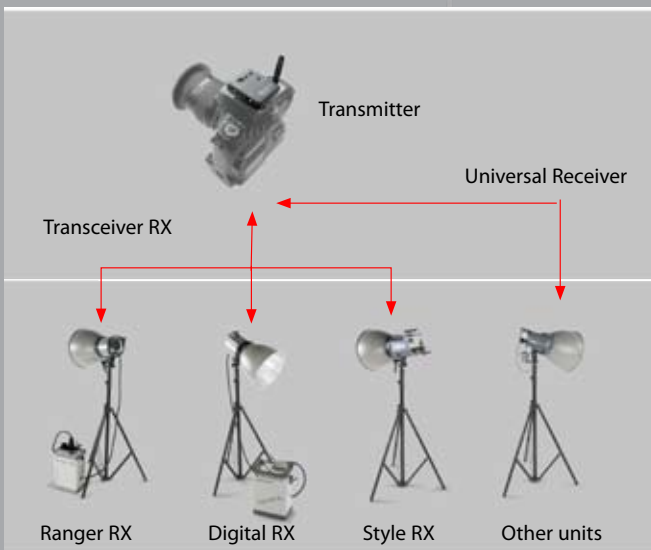
Transmits and receives

Universal Receiver

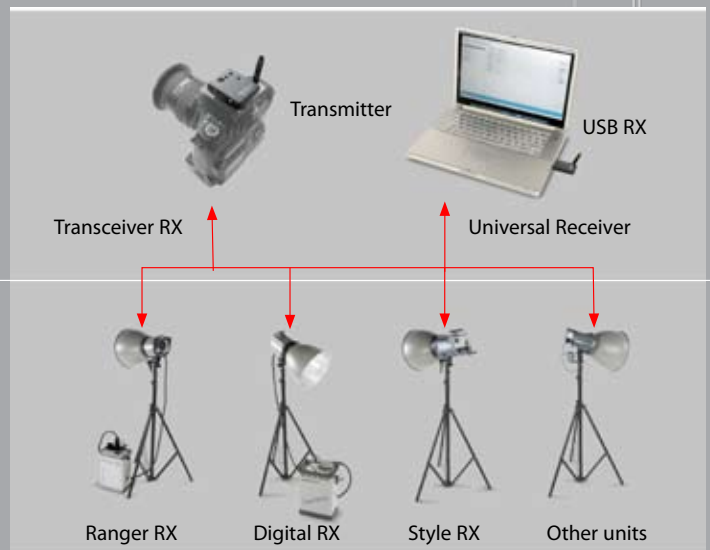
Receives and transmits basic information to the computer remote control

USB Transceiver RX

Transmits and receives full computer remote control



Triggering, flash power and modeling lamp on/off functions for all RX units are controlled with the "Transceiver RX" module. The "Universal" module triggers any other flash system.



The "Computer Remote" option controls and operates all RX unit functions and triggering. The "Universal" module accepts triggering and flash delay settings from computers with other flash systems.

EL-Skyport

EL-Skyport Transmitter EL 19351

One of the smallest triggers on the market, this module controls power in 1/10 of a stop increments and the modeling lights of an Elinchrom RX unit to which a Transceiver RX EL 19353 is attached. To control all RX functions the USB Transceiver RX EL 19354 and the latest EL Skyport software is required.

The Transmitter synchronizes remote flash units, when each is fitted with either a "Universal" (which will flash any brand) or the RX Transceiver (fitting Style RX, Digital RX and Ranger RX units). The RX Transceiver also provides control over the power and modeling lamp of all Elinchrom RX flash units, directly from the Skyport Transmitter.

Features

+/- Buttons to change flash power settings of RX units and to switch modeling lamp on/off, without using a computer.

Action freezing sync speeds: Up to 1/1000's for electronic shutter cameras*.
Up to 1/800's for leaf shutter cameras*.
Up to 1/250's for focal plane shutter cameras*.

Studio operating range is approximately 165' indoors and 395' outdoors.

Includes Hotshoe with Sync socket.

Test button for manual flash trigger.

Interference free operation with 40 bit security.

Switch to select 8 frequency channels - for example between separate working areas.

Switch to select 4 workgroups - adjusting and synchronizing individual units or groups.

Long life Lithium Battery providing 50,000 flashes or approximately 3 months lifetime.

The "All" switch controls all units in Workgroup 1-4.

The moveable antenna optimizes reception and working distance.

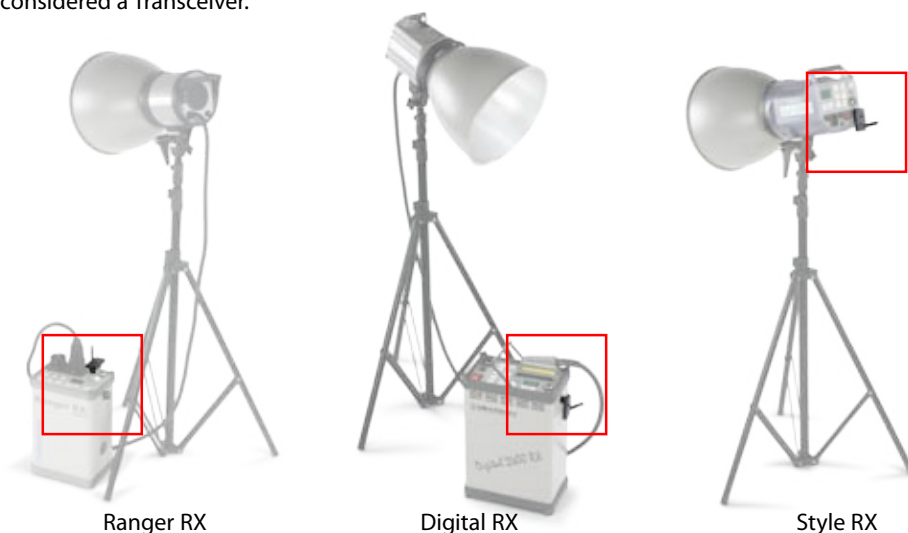
* Speed dependent upon camera model and capabilities.

EL-Skyport Transceiver RX EL 19353

This module fits only Elinchrom RX units. No internal battery is required, just plug into a Style RX, Ranger RX or Digital RX flash unit and the Skyport Transceiver RX is ready to use. To control the flash power, modeling lamp and flash synchronization, only the Skyport Transmitter is required. To control all RX functions, the latest EL-Skyport software and Skyport USB Transceiver are required.

The EL-Skyport software offers additional features, such as the power to watt second readings, programmable and re-useable Flash-Settings, Flash-Delay, Flash-Counter and studio setup notes. Other control features will be added as future software upgrades.

Because this unit communicates back and forth with the Skyport Transmitter it is considered a Transceiver.



Ranger RX

Digital RX

Style RX



EL-Skyport Universal Receiver EL 19352

The Skyport Universal Receiver is compatible with Elinchrom and any other flash brands.

Skyport Universal Receiver is delivered with one Elinchrom standard sync cable and one 3.5 mm jack. The internal, rechargeable Li-Ion battery provides approximately 30 hours of operation. To maximize battery life, the Auto-Standby function activates if the unit is not used for 4 hours. The Skyport Universal Receiver can be charged while in operation. The status LED shows charge and operating modes.

Features

The included charger recharges the Li-Ion battery in approximately 3 hours.

The LED indicates charge and operating modes.

When used with the EL-Skyport wireless software, this module is recognized as a flash unit and accepts both triggering and Flash-Delay settings - for example, where sequenced flash may be required.

All other features and performance are the same as the EL-Skyport Transmitter.



Any other non RX flash unit

EL-Skyport USB Transceiver RX EL 19354

The USB Transceiver RX module fits any Mac™ or Windows™ computer. By installing the EL-Skyport software, all Elinchrom RX flash units can be controlled. The program automatically searches for the Transceiver RX and Universal Receiver modules.

Note: Full remote control is only available by using a full RX Transceiver system. RX flash units or other flashes using the Universal Receiver can only offer synchronization and strobing options.



recess

EL-Skyport Software

EL-Skyport Software Version 2.0.1

This release of the EL-Skyport software includes exciting features for photographers who want to optimize their digital workflow. Using Mac™ or Windows™ operating systems this modern, digital studio management software can control wirelessly up to 64 flash units. EL Skyport software can save and re-use studio setup notes and flash settings making it easy to re-create complex shots.

What you need to make it work:

Elinchrom RX compacts, main power packs or battery power packs with the included computer interface.

EL-Skyport Transceiver RX module for each RX unit

EL Skyport USB Transceiver RX for the computer

A computer running EL Skyport software for Mac™ or Windows™ operating systems

The program shows all RX unit settings:

Flash power setting in 1/10 f-stop or in individually settable steps

Modeling lamp setting in 1/10 f-stop, proportional, free and off

Photocell (slave) on/off

Ready charge beep on/off

Flashhead socket selection A/B (only activated with Digital RX power packs)

Standby

Additional Features:

Automatic RX unit detection and addressing. As soon as the RX unit is switched on and connected with the EL-Skyport Transceiver, the software searches for RX units.

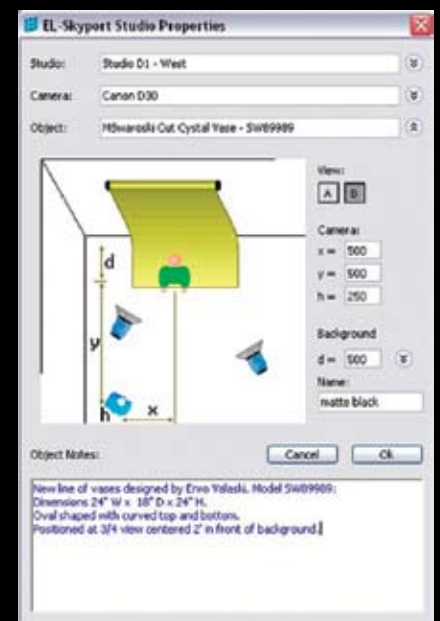
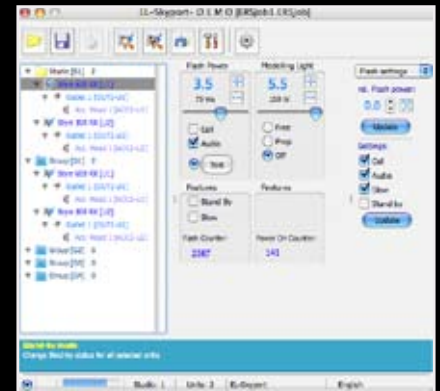
Flash counter and on/off counter; the software reads out online RX flash unit information. This data is stored in the RX Micro controller and is not resettable. This is useful information for "Rental, Service and Second-User."

Individual settable Flash-Delay for strobing effects.

Store function for studio lighting setups including reflector, accessory and unit settings. By recalling the settings, the RX unit automatically applies stored parameters.

Includes "Test" feature for EL-Skyport modules.

Individual setting of "Preferences".



EL-Skyport Sets

The EL-Skyport modules are available as single items or complete economical set configurations.

EL-Skyport Universal Trigger Set EL 19360

1x EL 19351 Transmitter, battery and spare battery drawer

1x EL 19352 Universal Receiver incl. wall adapter charger

1x EL 11120 Sync cable 7.8" (20 cm), 2.5mm Jack / Camera X-socket

1x EL 11122 Sync cable 15.75" (40 cm), 3.5mm / 3.5mm Jack

1x EL 11123 Sync cable 15.75" (40 cm), 3.5mm Jack / EL Standard Sync socket

1x EL 11125 Adapter 6.3 – 3.5 mm



EL-Skyport RX Trigger Set EL 19362

1x EL 19351 Transmitter, battery and spare battery drawer

2x EL 19353 Transceiver RX

1x EL 11120 Sync cable 7.8" (20 cm), 2.5mm Jack / Camera X-socket

Note: Ranger RX requires the Remote adapter cable 11124.

A new Remote adapter plug will be available soon.



EL-Skyport Computer Remote / Trigger Set EL 19361

1x EL 19351 Transmitter, battery and spare battery drawer

2x EL 19353 Transceiver RX

1x EL 19354 USB Transceiver RX

1x EL 11120 Sync cable 7.8" (20 cm), 2.5mm Jack / Camera X-socket

1x EL 11121 USB extension cable

1x EL 19375 EL-Skyport Software 2.0 for Mac™ or Windows™



For further details, upgrades, news and information about EL-Skyport please visit www.elinchrom.com.



bogen
imaging